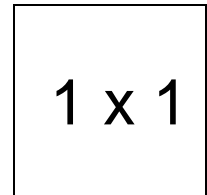


Crazy Patch Bucket Hat

Important note:

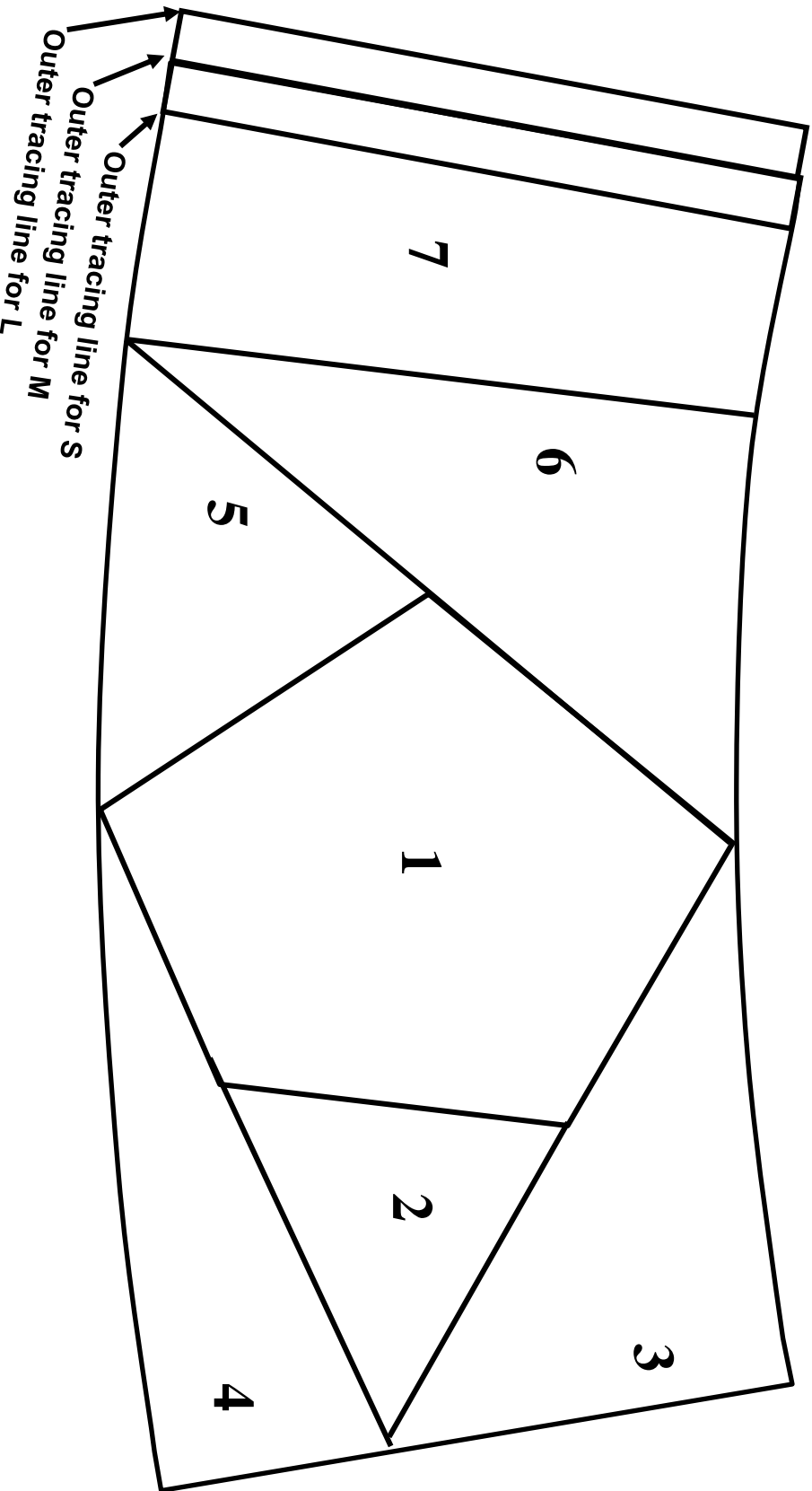
The pattern pieces are designed to be printed at 100%. Before printing the patterns, make sure that page scaling is set to none in Adobe Acrobat print window. To be sure that your patterns are going to print at the correct size, measure the box on the first pattern page. It should measure exactly 1 inch by 1 inch.



1 x 1

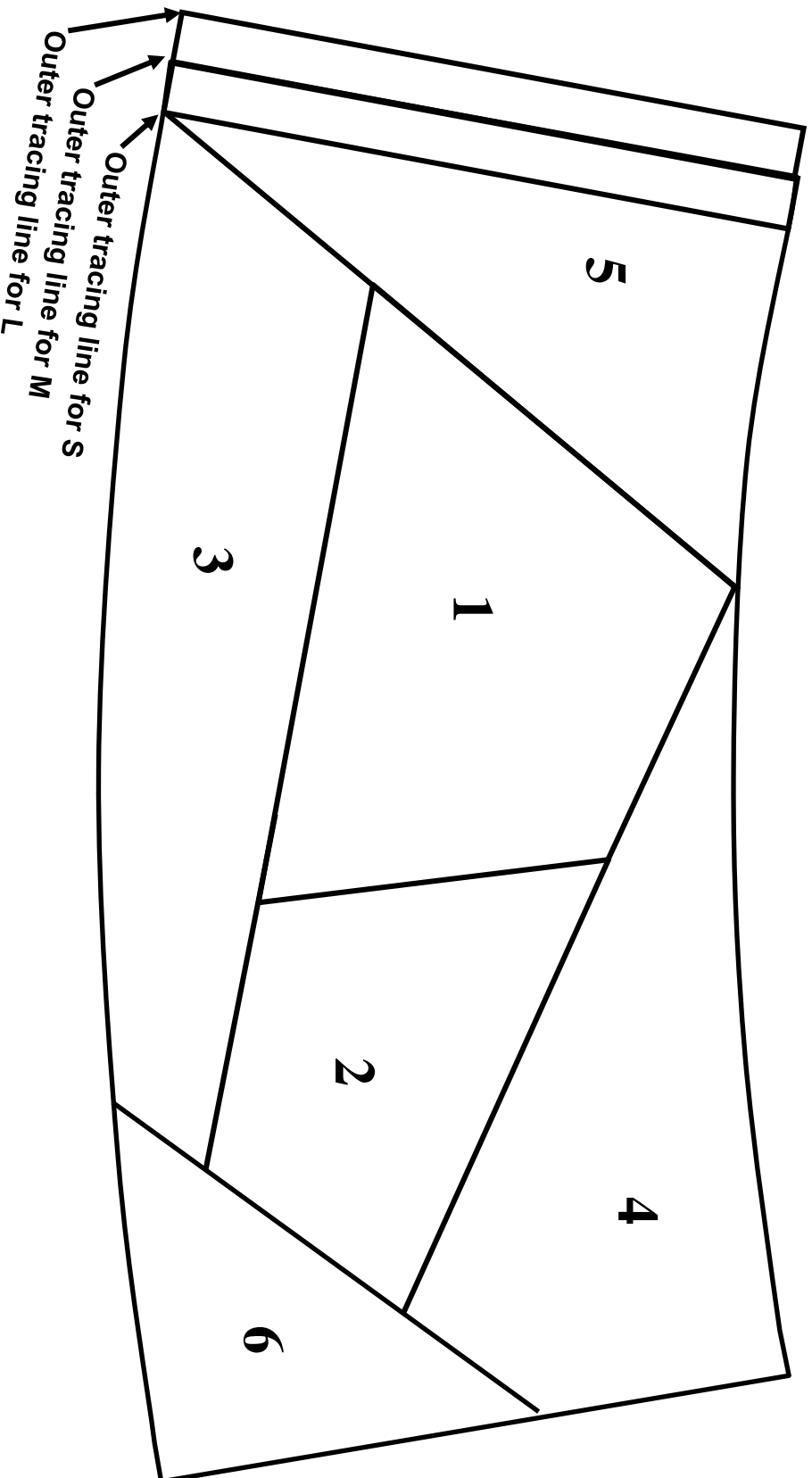
Band Foundation 1

Trace 1 onto muslin



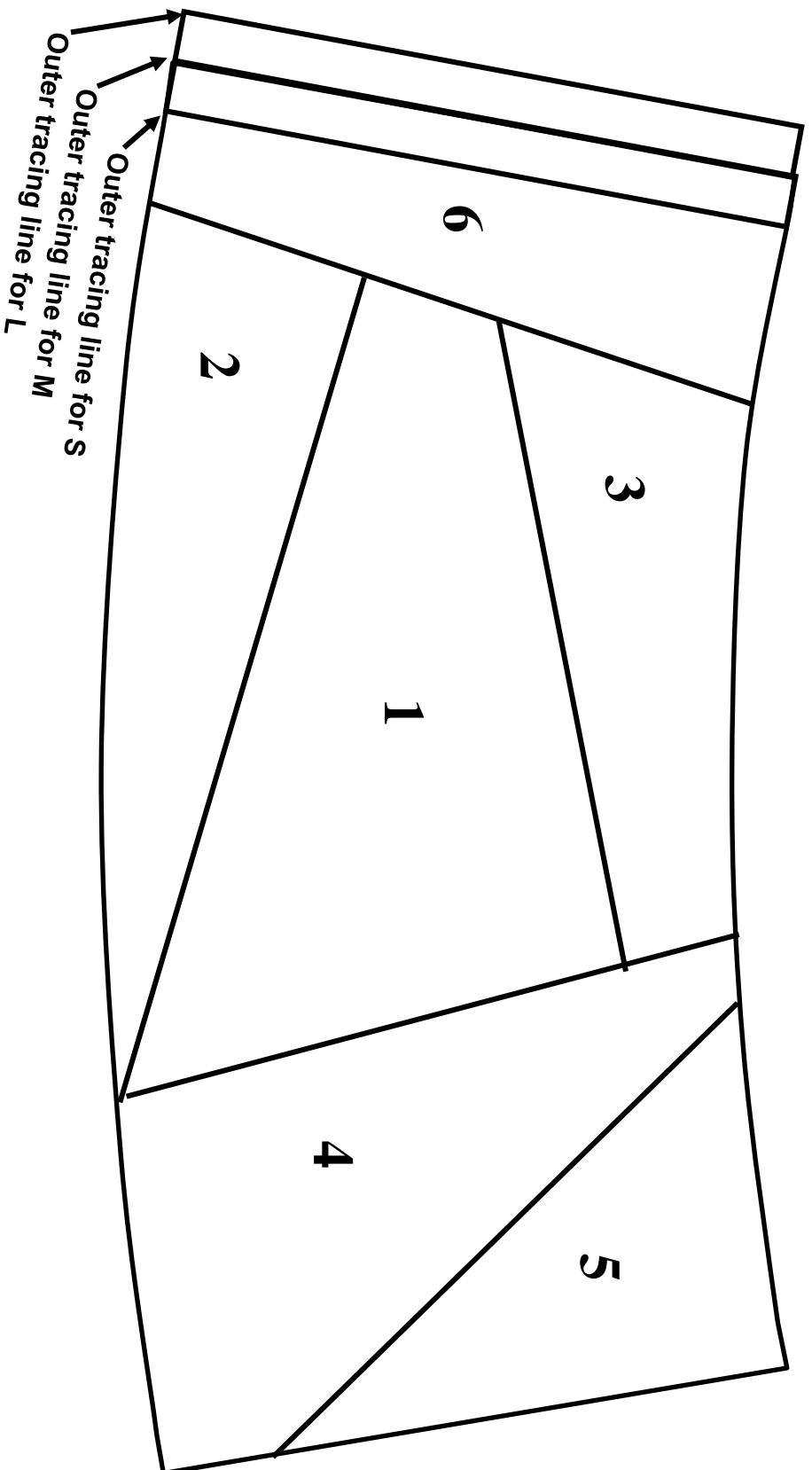
Band Foundation 2

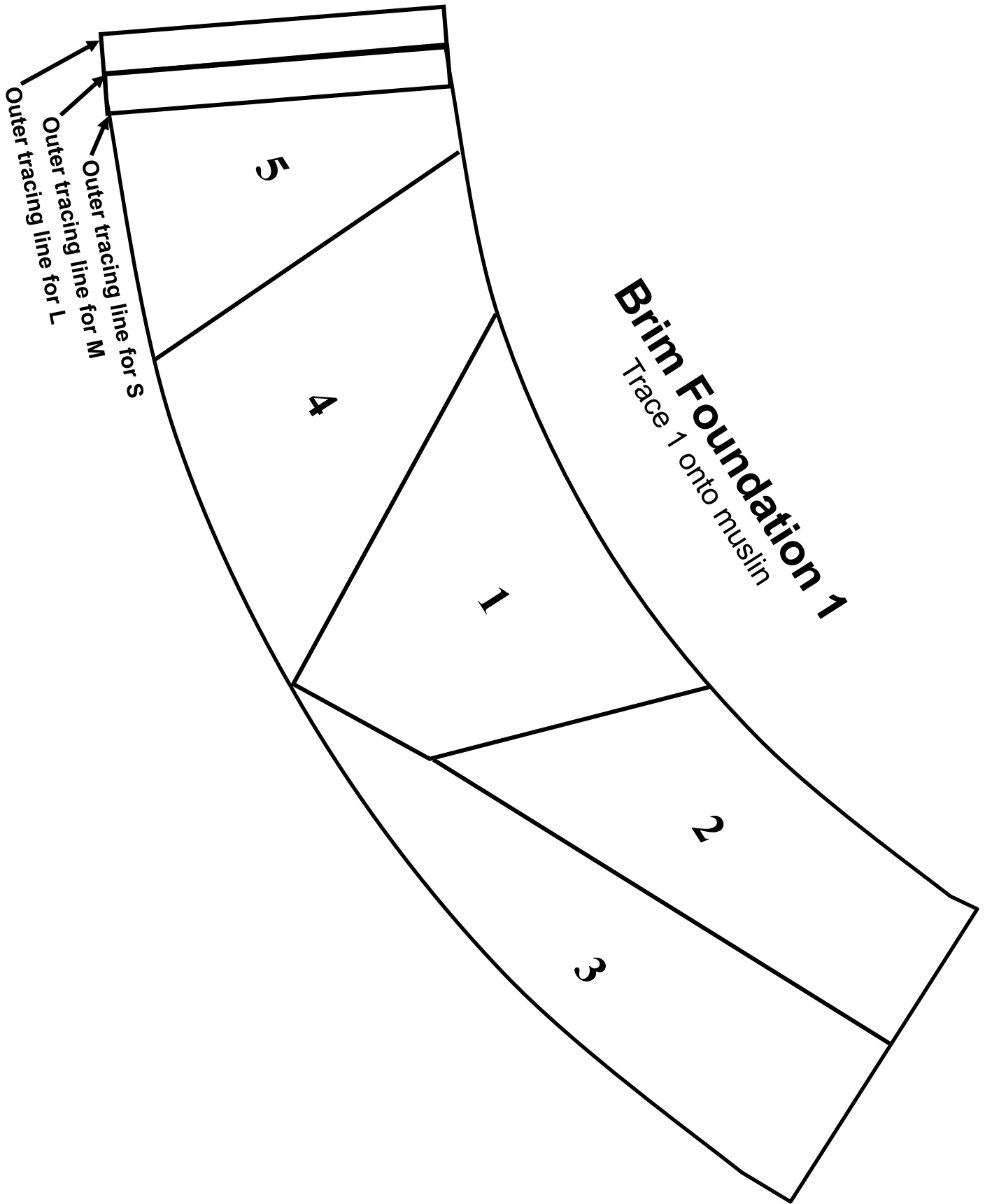
Trace 1 onto muslin



Band Foundation 3

Trace 1 onto muslin





Brim Foundation 1

Trace 1 onto muslin

5

4

1

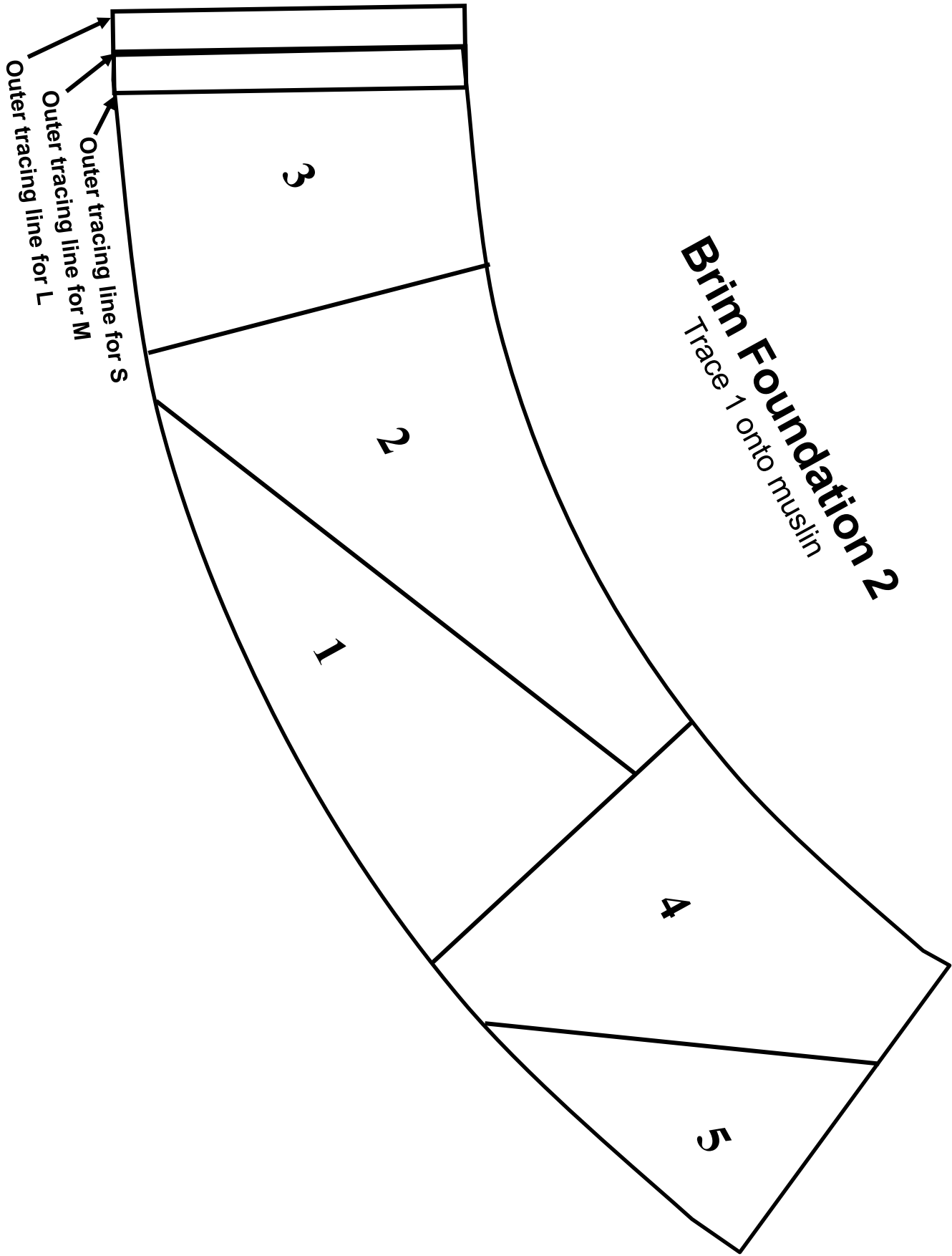
2

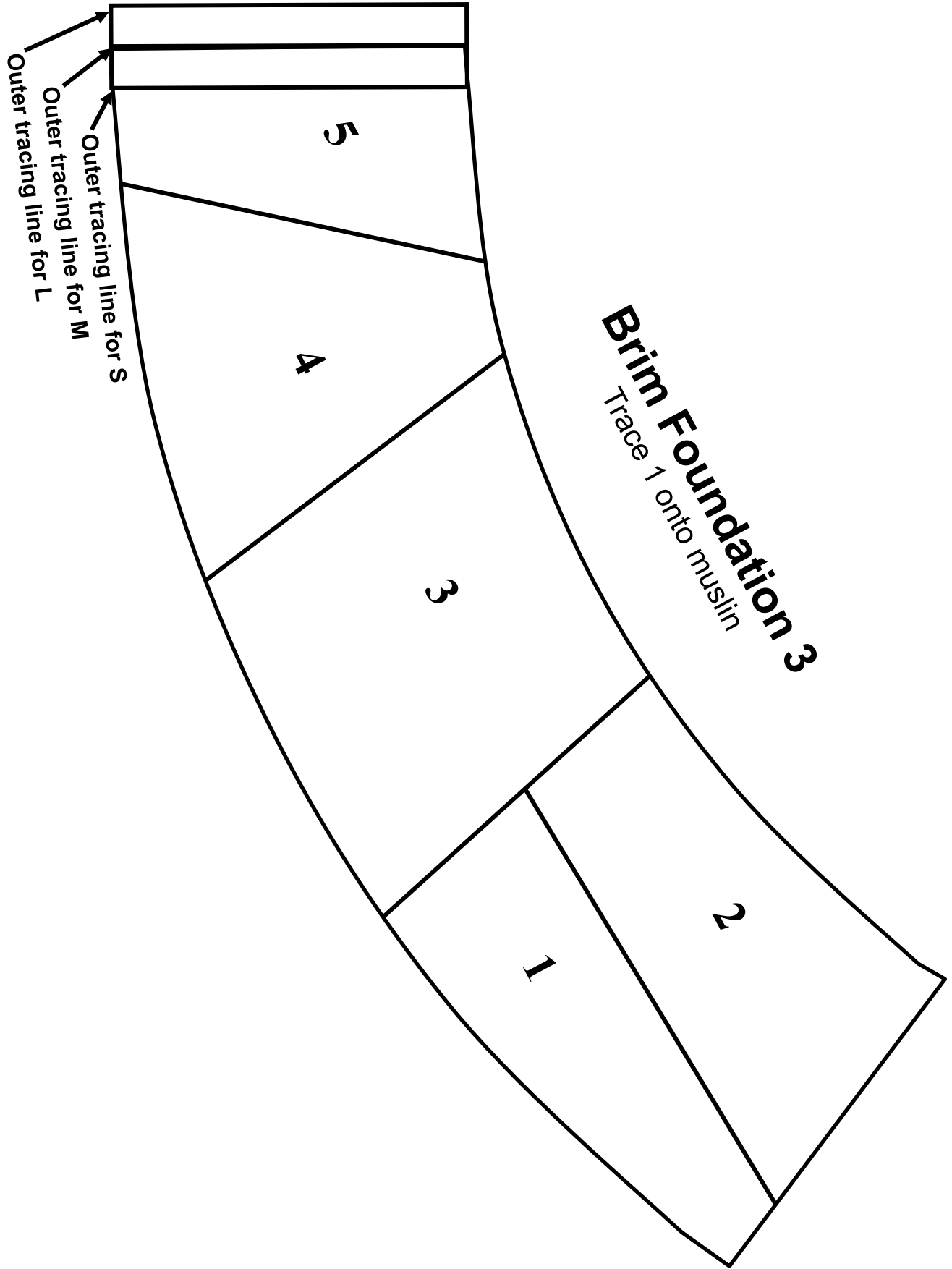
3

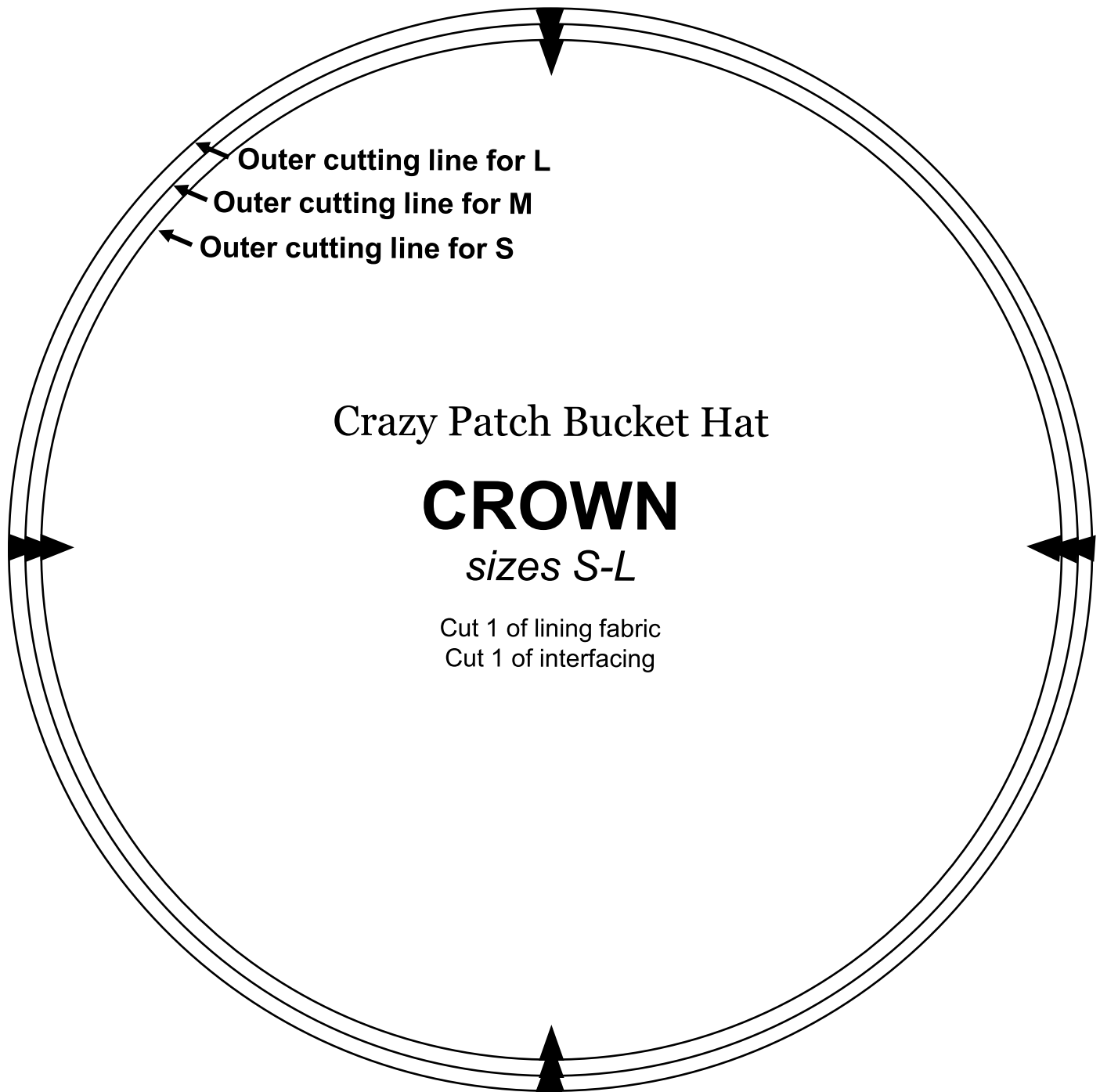
Outer tracing line for L
Outer tracing line for M
Outer tracing line for S

Brim Foundation 2

Trace 1 onto muslin







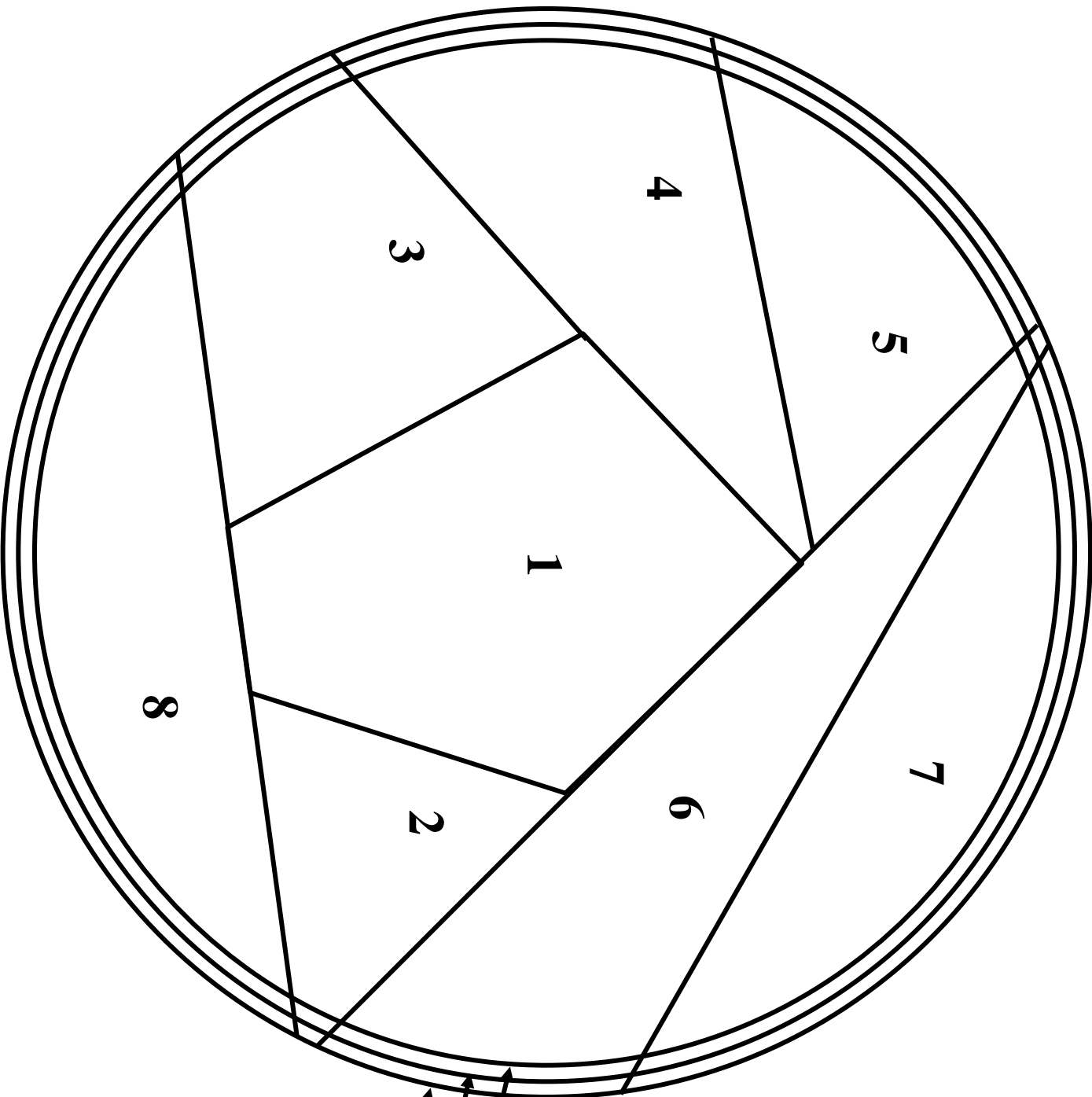
Outer cutting line for L
Outer cutting line for M
Outer cutting line for S

Crazy Patch Bucket Hat

CROWN

sizes S-L

Cut 1 of lining fabric
Cut 1 of interfacing



Crown

Foundation

Trace 1 onto muslim

- Outer tracing line for S
- Outer tracing line for M
- Outer tracing line for L

Outer cutting line for L
Outer cutting line for M
Outer cutting line for S

BAND
sizes S-L
Part A

Place over shaded area on Part B

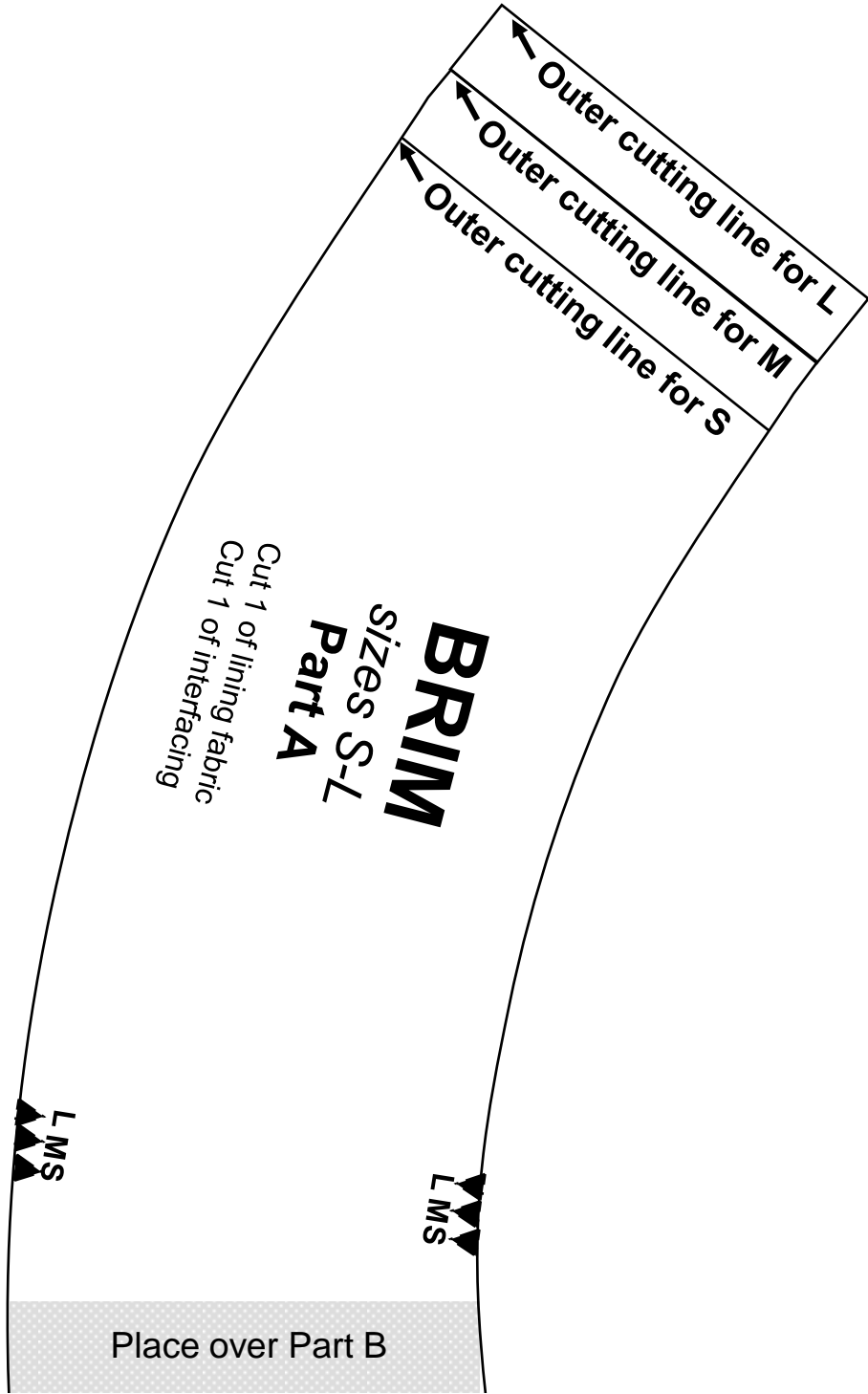
Overlap and attach Part A here

L
M
S

L
M
S

Crazy Patch Bucket Hat
BAND
sizes S-L
Part B
Cut 1 of lining fabric
Cut 1 of interfacing

Place edge on fold



Place over Part B

BRIM
sizes S-L
Part B
Cut 1 of lining fabric
Cut 1 of interfacing

Crazy Patch
Bucket Hat

Place edge on fold

